

ERROR CODE	DESCRIPTION	CAUSE	REMEDY
OC1	Short-circuit	Motor/power cables short-circuit	<ul style="list-style-type: none"> Check power cables and motor
OC2	Discharges toward ground	One motor phase is grounded	<ul style="list-style-type: none"> Check power cables and motor
OH	Inverter heat sink overheat	Failed or poor inverter cooling	<ul style="list-style-type: none"> Clean inverter cooling fan filter Blow inverter heat sink with compressed air to clean Check inverter cooling fans operation
OH3	Motor overheat	<ul style="list-style-type: none"> Frequent start/stop operations PTC failure “Dirty” motor 	<ul style="list-style-type: none"> Decrease the number of start/stop operations Contact the Service Centre Open motor case and clean the motor. Excessive dirt adversely affects motor cooling.
OH4	Inverter overheat	Failed or poor inverter cooling	<ul style="list-style-type: none"> Clean inverter cooling fan filter Blow inverter heat sink with compressed air to clean Check inverter cooling fans operation
If any other error code is displayed, please take note and contact the Service Centre			

7.2 AFTER-SALES SERVICE

The Manufacturer is always willing to answer Customer's questions and give information on use, maintenance or installation and so on. Please follow the instructions given under paragraph 1.2 on how to request our assistance.

8 SPARE PARTS

8.1 SPARE PARTS LIST

Exhauster use does involve some expendable parts. Following is the list of available spare parts and expendable parts.

Table 8.1- A

POS.	DESCRIPTION	PART NO.
1	Side-channel blower	Tornado 11i: SK11-I-S-0001 Tornado 15i: SK15-I-S-0001
2	Solenoid valve	9018
3	Pressure regulator	6709
4	Pressure gauge	K2-78
5	Silencer	SIL-6
6	Dedusting device	K5-0080
7	Filter cartridge	K5-38-C-POLY
8	Top seal	7867
9	Vacuum tube	TA-29-040
10	Vacuum tube fittings	6468+6469+M92
11	Bottom seal	7867



POS.	DESCRIPTION	PART NO.
13	Cooling fan	
14	Dust collection bag	99987

8.2 ORDERING SPARE PARTS

We remind you that the Machine can only be repaired by a Qualified Technician.

It is hence recommended to contact the Manufacturer After-sales Service that will make available Qualified Personnel, suitable equipment and original spare parts.

To order above-listed spare parts, please refer to paragraph 1. 2

9 SCRAPPING

9.1 DISPOSING OF WASTE

During processing, waste or rejections are created that shall be collected, recycled or disposed of, in compliance with the prevailing laws of the country where the Machine is installed.

9.2 MACHINE SCRAPPING

Upon unit scrapping, separate the plastic parts from any electrical components, that shall be sent to different waste disposal centres, as per prevailing rules.

The Machine metal parts shall be divided into steel and other metals or alloys, and then routed to recycling firms.

Unit scrapping does not cause any special risk, as far as it is performed by qualified personnel with suitable equipment.

10 ANNEXES

10.1 DECLARATIONS

The following Declarations are hereby attached:

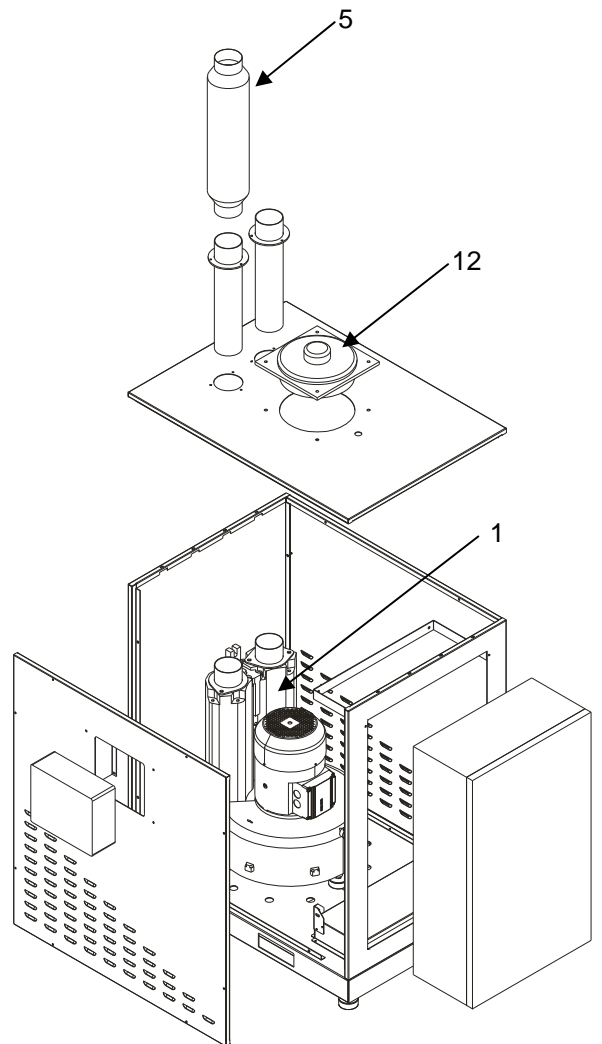
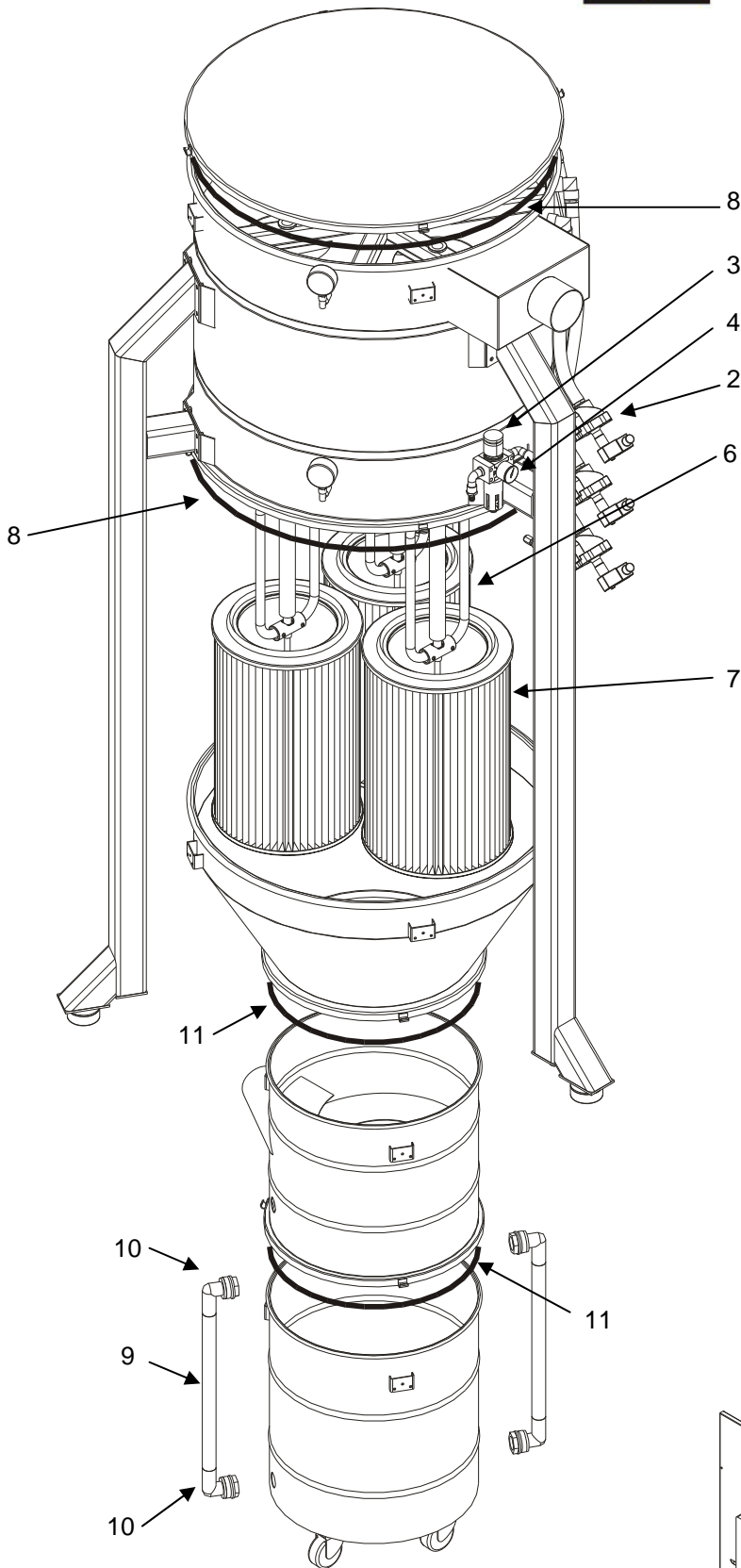
- Declaration of conformity to Directives 98/37/EC (former 89/392/EEC), 89/336/EEC and 73/23/EEC.

10.2 DIAGRAMS

The following Diagrams are hereby attached:

- Electric circuit diagram and key;
- Pneumatic circuit diagram;
- Machine exploded view.





Please see descriptions in Table 8.1-A, page 20